

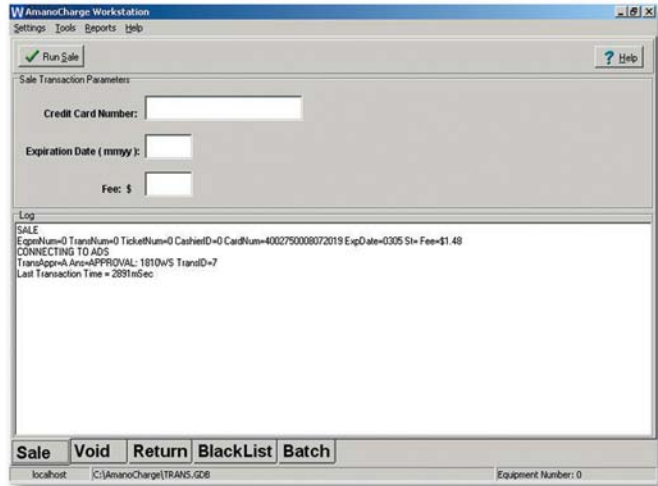
AGP-9400 AmanoCharge

Centralized Credit Card Processing System

AmanoCharge is a complete, centralized credit card processing solution. It is designed to facilitate centralized processing of credit card transactions from Amano AGP revenue equipment (fee computers, pay stations, and ExpressParc units) in a facility using the ADS (Alliance Data Systems) clearinghouse network. It provides real-time approval and eliminates the need for phone lines to each piece of equipment.

AmanoCharge Server

Credit cards accepted for payment at the Amano AGP series fee computers and pay stations are approved real time via the AmanoCharge Server. AmanoCharge Server processes all credit card transaction requests and provides the conduit to the ADS Network Processor. AmanoCharge is designed to be shared with an on-line credit card system host for ExpressParc components of the system.



AmanoCharge Workstation

The AmanoCharge Workstation is required to manage the Server database. The Workstation is a configuration and maintenance tool, allows the running of manual transactions, including returns and voids, controls various settings, launches settlement, enables batch, maintains a blacklist, and provides consolidated reporting. The Workstation can be installed either on the server or a remote workstation.

Communications Options

AmanoCharge has been certified by ADS to process transactions via the Internet, satellite, frame relay and T-1.

SPECIFICATIONS

SYSTEM REQUIREMENTS

AmanoCharge is intended to operate on a dedicated PC in order to ensure system security performance.

AmanoCharge Server

Minimum Requirements:

- Pentium 3 processor: 1 GHz or faster
- Windows 2000 or Windows XP
- 256 MB of RAM
- 30 GB or larger hard drive
- (2) network cards (10/100 Mbps)
- UPS (Uninterruptible Power Supply)

Recommended Additions:

- 30 GB minimum additional drive for data protection using Shadowing feature
- 56K modem and phone line (backup system)
- PC Anywhere software
- Printer

AmanoCharge Workstation

Minimum Requirements:

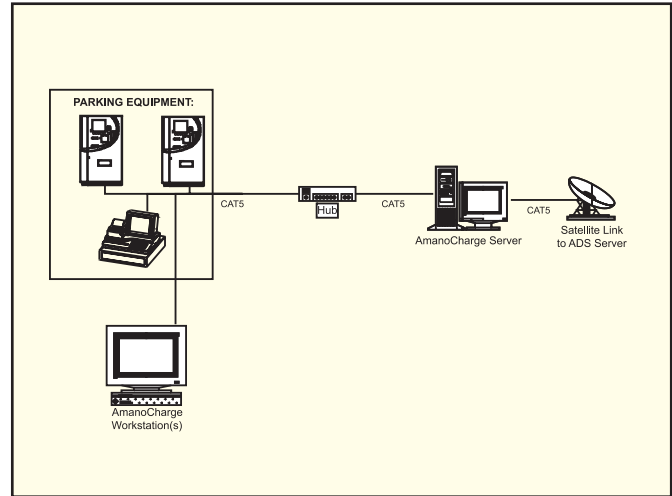
- Windows 98 or higher
- Network card (10/100 Mbps)
- (1) parallel printer port for Sentinel key

Options

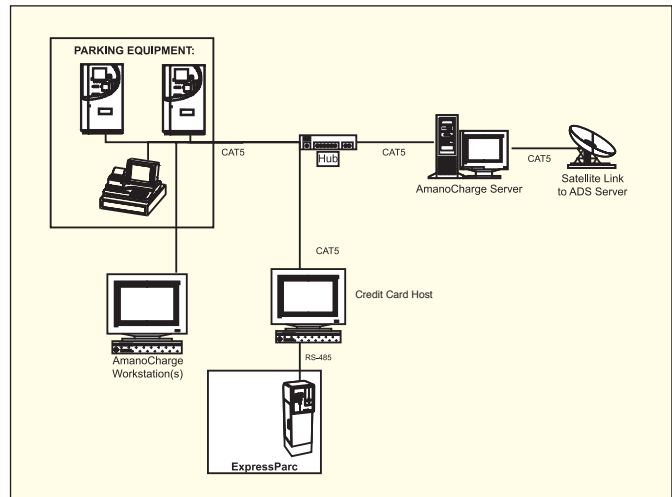
Additional AmanoCharge Workstations are available as an option (AGP-9400/A715)

Specifications are approximate and are subject to change without notice

Sample Network Configuration:



Sample Network Configuration using ExpressParc:



REPRESENTED BY:



We Understand Parking

Corporate Headquarters: 140 Harrison Avenue, Roseland, NJ 07068-1239
Atlanta / Chicago / Cincinnati / Dallas / Los Angeles / New York / Toronto

(800) 526-2559 www.amano.com