

AGP-7800 Series

Central Pay Station

Features:

- Ergonomic, customer-friendly, spacesaving, compact modular design.
- Large, easy-to-read 15-in. flat panel display.
- Intuitive, easy to use - Lighted guidance system helps patrons make fast transactions.
- Meets ADA and ANSI requirements.
- Lightweight, easy maneuverability, easier installation.
- Superior detection/rejection technology. Zero note escrow standard.
- One-drop change location eliminates confusion.
- Accepts notes and coins. Faster, more reliable electronic self-replenishing coin system eliminates tubes with option for up to three recycling coin hoppers and a fourth non-recycling hopper.
- Dispenses notes (up to 3), coins (up to 4), and receipts.
- Large, 8-in receipt roll - saves labor, improves security.
- Project-configurable.
- Ethernet-based peripheral communications sub-system.
- Uninterruptible power supply.
- Note storage in individual, lockable cassettes.
- Scalable hardware/software.



Credit Card Only model available.

SPECIFICATIONS

AGP-7800 Central Pay Station

Compliance

Meets both ADA (Americans with Disabilities Act) and ANSI (American National Standards Institute) requirements

Electrical:

- Power source: 120VAC, 50/60HZ
- Power consumption: Average 60W, maximum 1100W
- Power reserve: Clock and program data are protected for 72 hours by a Ni-Cad battery

Ambient Environment:

- Temperature: 14° F to 104° F (-10° C to 40° C)
- Relative humidity: 10% to 90% (no water condensation)
- Automatic thermostat-controlled heaters and fan included

Housing:

Height: 63.1" (1603 mm)

Width: 38.3" (973 mm)

Depth: 27.2" (690 mm)

Construction: Sheet steel housing Fiberglass Front Cover

Cabinet Finish: Textured Powder coat finish RAL 7032

Door Finish: Polyurethane paint on fiberglass

Total Weight: Approximately 800 lb. (363 kg)

Time Control:

- Quartz oscillated, accurate within ± 3 seconds per week at 68° F to 86° F (20° C to 30° C)
- Perpetual calendar
- Programmable Daylight Saving Time adjustment

On/Off-Line Operation:

The model AGP-7800 may operate as a stand-alone unit utilizing the keyboard of the internal PC to program the pay station.

On-Line Operation:

Utilizes RS-485 or Ethernet communication with the parking management software host. Data sent from the pay station to the host PC includes individual transaction data, alarm and event messages. Data sent from the parking management software to pay station includes program data updates, time synchronization, backout ticket data and in/out of service status.

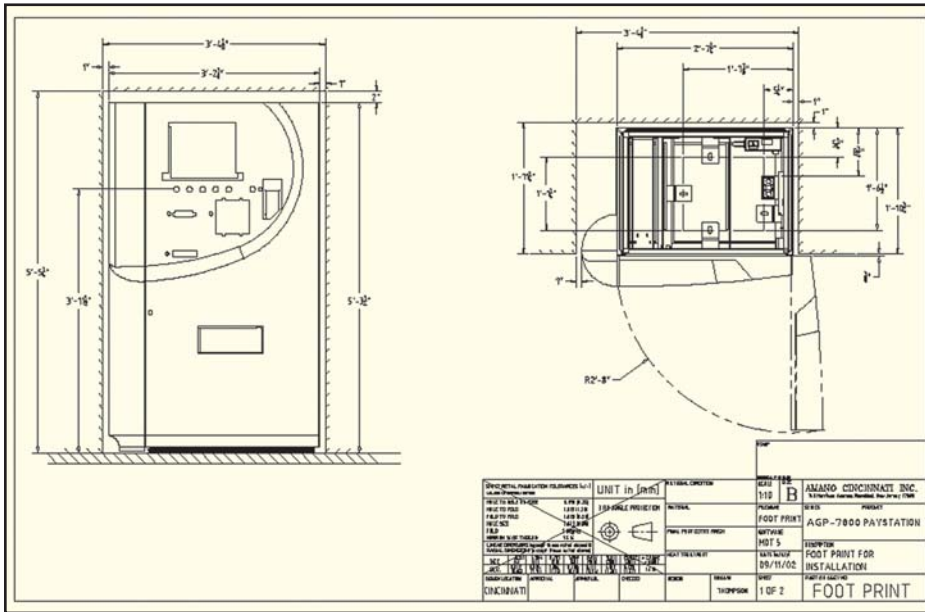
Security

Multi-point safety lock system with concealed hinges

Access Lock: Secures the main locking mechanism utilizing a plug type lock to be removed in order to gain access to the inner lock.

Inner Lock: Secures the pay station door utilizing a T-shaped key

Intruder alarm



Manufactured by Amano Cincinnati, Inc.'s Ohio factory, an ISO 9001:2000 registered facility.

Specifications are approximate and are subject to change without notice

REPRESENTED BY:

AMANO®

140 Harrison Avenue, Roseland, NJ 07068-1239

(800) 526-2559 www.amano.com